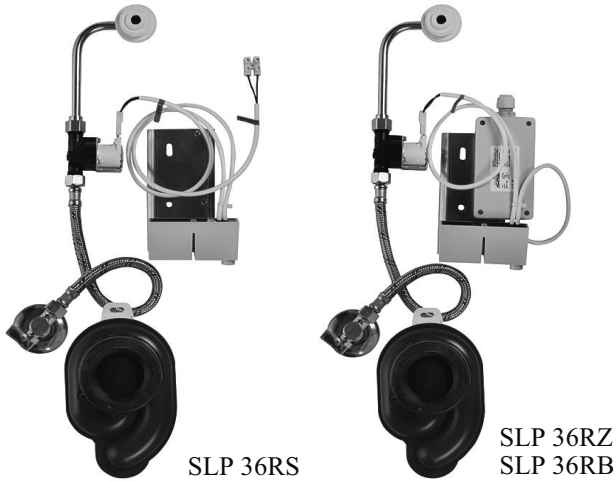


Radars Flushing Unit for Golf Urinal SLP 36RS



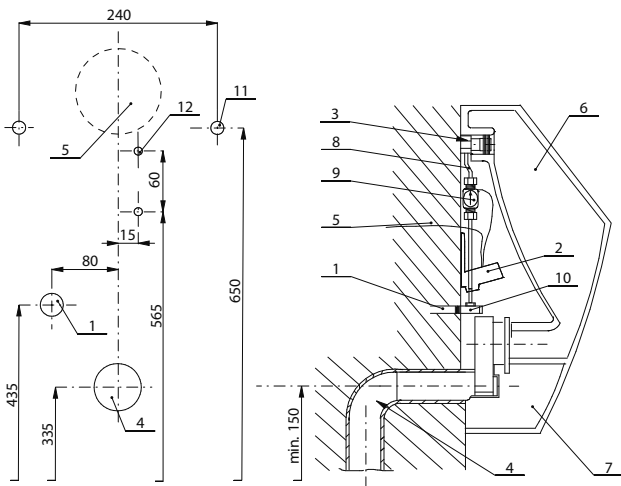
Characteristics:

1L

LEED

- economy flushing by 1 liter of water
- radar flushing unit for urinal Golf (Ideal Standard)
- easy installation by the help of paper drill template
- system reacts only on the direct use of the urinal (it analyses changes, which are proceeded inside of the urinal, when a liquid (urine) is flowing through)
- adjustable flushing time from 0,5 to 15,5 seconds
- adjustable minimum use time (min. time of urinal direct using) from 6 to 15 sec.
- parameters adjustment by remote control SLD 04 (without the necessity to dismantle the urinal from the wall)
- automatic flushing after each 6 hours non-use
- possibility to regulate a water flow by the ball stop valve
- radar flushing unit recharges a water to the siphon after each flushing

Installation Drawing:



- 1 - water supply
- 2 - electronics with a radar sensor
- 3 - inlet fitting with a rubber seal
- 4 - waste pipeline Ø 50 mm
- 5 - feed cable from the power supply (only for SLP 36RS)
- 6 - ceramic urinal
- 7 - siphon
- 8 - connecting hose
- 9 - electromagnetic valve
- 10 - angle valve
- 11 - 2 holes Ø 14 mm for wall plug
- 12 - 2 holes Ø 8 mm for wall plug

dimensions [mm] width height depth
GOLF 360 560 355

Technical Specification:

Operating voltage	24V DC external
- SLP 36RS	230V AC/50Hz
- SLP 36RZ	6V
- SLP 36RB	
Power input	5 W
- operating by 24V DC	0,1 - 0,6 MPa
Recommended flow pressure	12 l/min. (inf. data)
Rate of flow	male thread G 1/2"
Water inlet	inlet fitting with a rubber seal
Water outlet	



SLA 11



SLA 18

Supply Specification:

- SLP 36RS – supply No. 11365 radar flushing unit on the mounting rail for urinal Golf; electromagnetic valve (1 pc.);
- SLP 36RZ – supply No. 01365 connecting hose; angle valve with a filter and non-return valve; inlet fitting with a rubber seal; siphon; paper drill template; integrated power supply (only for SLP 36RZ);
- SLP 36RB – supply No. 11367 4 pcs. of alkaline batteries AA 1,5 V, 2700 mAh (only for SLP 36RB); mounting set

Recommended Accessories:

- SLZ 01Y – supply No. 05012 external power supply 230/24V DC for operating of max. 5 pcs. of flushing units (see page 118)
- SLZ 01Z – supply No. 05011 external power supply 230/24V DC for operating of max. 9 pcs. of flushing units (see page 118)
- SLD 04 – supply No. 07040 remote control for an adjustment of parameters of radar flushing unit and piezo electronics (see page 115)
- SLR 01L – supply No. 08015 mounting frame to the plasterboard for the urinal with radar flushing unit on the mounting rail (see page 116)
- SLA 11 – supply No. 06110 universal plastic sieve for urinals (see page 115)
- SLA 18 – supply No. 06180 plastic sieve with filling for urinals (see page 115)